

PRODUCT TECHNICAL DATASHEET

BG30/1504/HS

Brushless 

Intensive use 

High Speed 

Digital Encoder 

Magnetic limit switch 

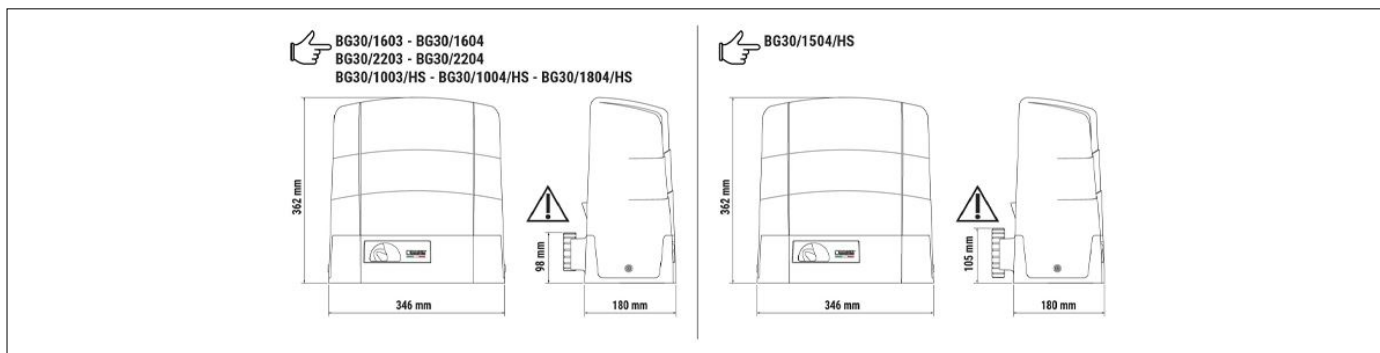


CODE	DESCRIPTION	PCS/PALLET
BG30/1504/HS	Electromechanical HIGH SPEED BRUSHLESS motor, low voltage, super intensive use, with native encoder onboard, irreversible ideal for sliding gates up to 1500 kg with built-in digital controller B70 series, with magnetic limit switch.	30

PRODUCT TECHNICAL SPECIFICATIONS	
Max gate weight	1500 kg
Power line supply	230V AC - 50Hz
Motor power supply	36V
Power rating	650W
Frequency of use	Intensive use
Thrust	50 - 1000N
Operating temperature	-20+55°C
Protection level	IP44
Reductor Type	Irreversible
Manoeuvre speed	25 m/min (0.42 m/s)
Limit switch	Magnetic
Onboard control unit	B70/1DCHP
Encoder	Digital native encoder + magnetic digital SENSORED, 4096 PPR
Batteries recovery	Optional 2 external battery 12V 4,5AH
Type exit gear	Z20/mod 4
Operating cycles per day (opening/closing - 24 hours no stop)	800

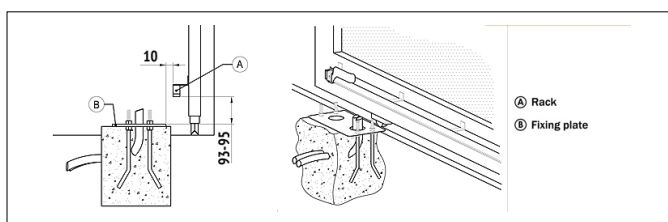
Maximum dimension product in mm (L x W x H)	346 x 180 x 362
Product weight packed (Kg)	20,5
Number items per pallet	30

PRODUCT DIMENSIONS AND PREPARING FOR INSTALLATION

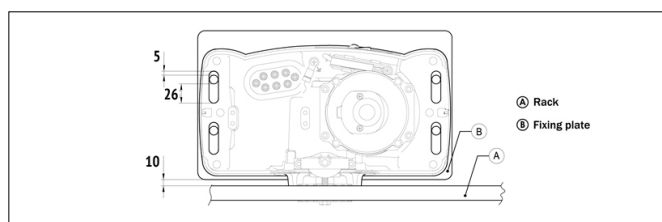


DIMENSIONS

PRODUCT PREPARING FOR INSTALLATION



PREDISPOSITION FOR STANDARD INSTALLATION



PREDISPOSITION FOR STANDARD INSTALLATION

PRODUCT ACCESSORIES



B71/BCHP/EXT
Kit for emergency batteries charger for Brushless digital controller EDGE1/BOX - B70/1DCHP 36V DC with plug-in card, with 2 recovery batteries 12V DC, 4.5 Ah. Box case included.



B71/BCHP/BOX
Kit for emergency batteries charger for Brushless digital controller EDGE1/BOX - B70/1DCHP 36V DC. Box case included and without recovery batteries.



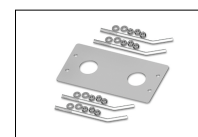
B71/PBX36/BOX
Hybrid inverter, "Network Assisted" version, for powering the automation. Also provides a battery-charger function thanks to the connection to the solar panels or mains supply for powering the 36V DC brushless digital controllers with a mains voltage of 230V AC.



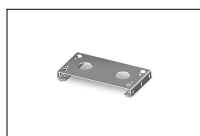
B71/PBX36/BOX/115
Hybrid inverter, "Network Assisted" version, for powering the automation. Also provides a battery-charger function thanks to the connection to the solar panels or mains supply for powering the 36V DC brushless digital controllers with a mains voltage of 115V AC.



B71/PBX/BOX
Hybrid inverter, "Full Solar" version, for powering the automation. Also provides a battery-charger function thanks to the connection to the solar panels for powering the brushless digital controllers.



KT215
Fixing plate with stay bolts and screws G30 series.



KT222
Raised fixing plate for G30 series (+3,5 cm).



HT421
External box without batteries, for battery BT12V45 (4,5 Ah), BT12V70 (7 Ah) and BT12V120 (12 Ah), up to a maximum of 3 batteries.



HT422
Plastic box for control unit F70/IPU36/BOX/SL.



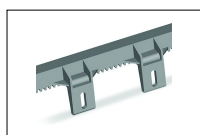
GA550
Galvanised steel rack 22x22x1000 module 4.



GA551
Galvanised steel rack 30x12x1000 module 4 with spacers and screws.



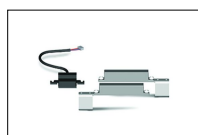
GA554
Pocket of 6 spacers (2,5 cm) and screws.



GA553
Nylon rack module 4 with 6 connectors L.1000.



GA557
Roger Technology nylon rack module 4 with 6 connectors L.1000.



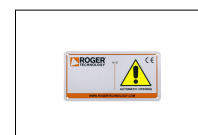
MC775
Kit magnetic limit switch for control unit H70/103AC, H70/104AC, B70/1DC, B70/1DCHP.



B74/BCONNECT
Module Wi-Fi B-CONNECT - Remote management and programming system in IP and CLOUD web browser mode via Wi-Fi hot spot P2P connection for Brushless control units (B70/2ML - EDGE1 - CTRL - CTRL/P - B70/1DCHP).



R99/C/001AL
Signboard "Automatic Opening" Aluminium version.



R99/C/001
Signboard "Automatic Opening".