

# PRODUCT TECHNICAL DATASHEET

# BH30/604/HS

Encoder 

Magnetic limit switch 

New **NEW**

24V **24V DC**

Brushless **BRUSHLESS**

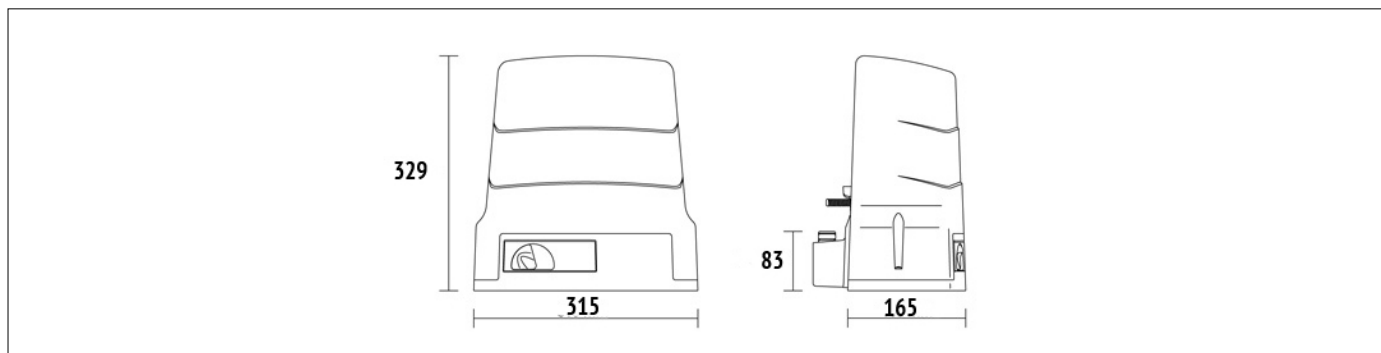


CODE	DESCRIPTION	PCS/PALLET
<b>BH30/604/HS</b>	Electromechanical HIGH SPEED BRUSHLESS motor, low voltage, super intensive use, with native encoder onboard, irreversible ideal for sliding gates up to 600 kg with built-in digital controller B70 series, magnetic limit switch.	44

PRODUCT TECHNICAL SPECIFICATIONS	
Max gate weight	600 kg
Power line supply	230V AC - 50Hz
Motor power supply	24V
Power rating	130W
Frequency of use	Intensive use
Thrust	50 - 500N
Operating temperature	-20+55°C
Protection level	IP43
Reductor Type	Irreversible
Manoeuvre speed	24 m/min (0.4 m/s)
Limit switch	Magnetic
Onboard control unit	B70/1DC
Encoder	Digital native encoder + magnetic digital SENSORED, 4096 PPR
Batteries recovery	Optional 2 internal battery 12V 1,2AH - Optional 2 external battery 12V 4,5AH
Type exit gear	Z15/mod 4
Operating cycles per day (opening/closing - 24 hours no stop)	800
Maximum dimension product in mm (L x W x H)	315 x 165,8 x 329
Product weight packed (Kg)	11,9

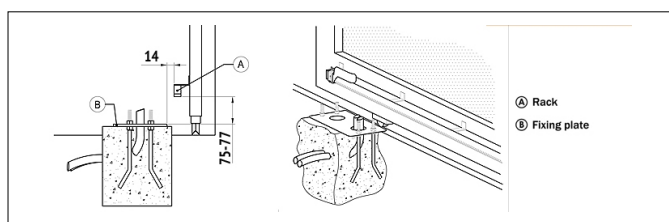


# PRODUCT DIMENSIONS AND PREPARING FOR INSTALLATION

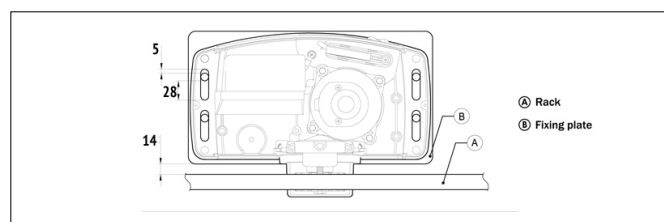


DIMENSIONS

## PRODUCT PREPARING FOR INSTALLATION



PREDISPOSITION FOR STANDARD INSTALLATION



PREDISPOSITION FOR STANDARD INSTALLATION

## PRODUCT ACCESSORIES



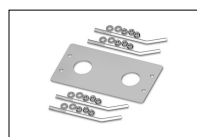
**B71/BC**  
Batteries charger for brushless digital controller B70/1DC.



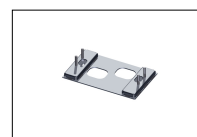
**BT12V12**  
Pair of batteries 12V 1.2 Ah.



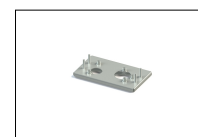
**BT12V45**  
Pair of batteries 12V 4.5 Ah.



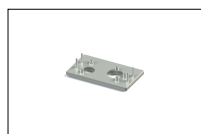
**KT214**  
Fixing plate with stay bolts and screws H30 series.



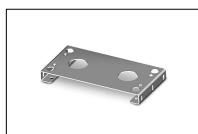
**KT214/SC**  
Adapter plate with stay bolts and screws H30 series.



**KT214/SF**  
Adapter plate with stay bolts and screws H30 series.



**KT214/SN**  
Adapter plate with stay bolts and screws H30 series.



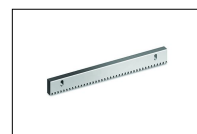
**KT221**  
Raised fixing plate for H30 series (+3,5 cm).



**HT418**  
External box without batteries, for battery BT12V45 (12V DC 4,5 Ah)



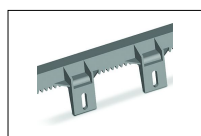
**GA550**  
Galvanised steel rack 22x22x1000 module 4.



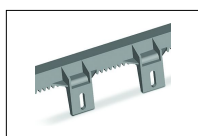
**GA551**  
Galvanised steel rack 30x12x1000 module 4 with spacers and screws.



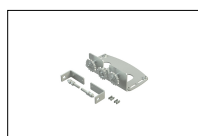
**GA554**  
Pocket of 6 spacers (2,5 Cm) and screws.



**GA553**  
Nylon rack module 4 with 6 connectors L.1000.



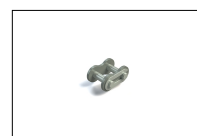
**GA557**  
Roger Technology nylon rack module 4 with 6 connectors L.1000.



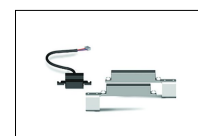
**LT330**  
Chain drive kit for H30 BH30 series.



**LT334**  
1/2" X 5/16" 5 meter chain piece for LT330 with joint.



**LT335**  
1/2" X 5/16" joint for LT334 chain section.



**MC775**  
Kit magnetic limit switch for control unit H70/103AC, H70/104AC, B70/1DC, B70/1DCHP.



**R99/C/001**  
Signboard "Automatic Opening".