

PRODUCT TECHNICAL DATASHEET

BH30/804

Encoder 

24V 

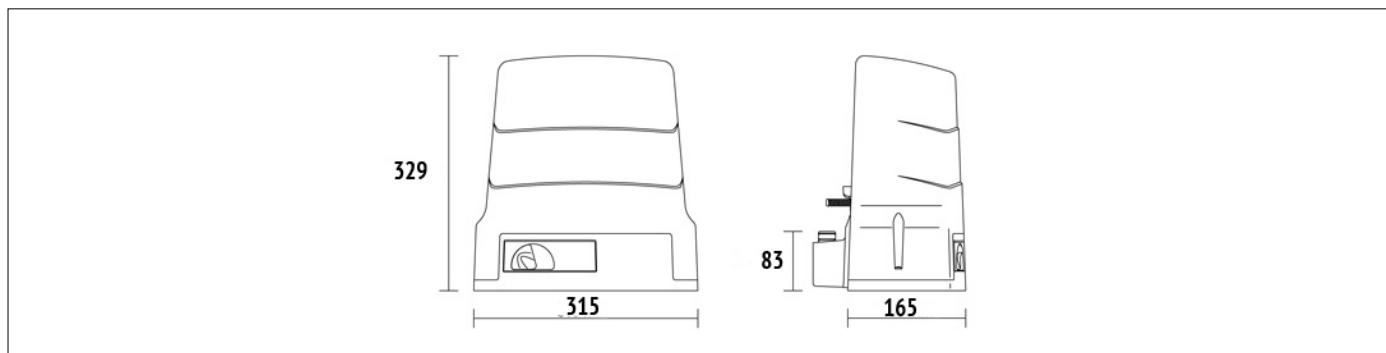
Brushless 



CODE	DESCRIPTION	PCS/PALLET
BH30/804	Electromechanical BRUSHLESS motor, low voltage, super intensive use, with native encoder onboard, irreversible ideal for sliding gates up to 800-1000 kg with built-in digital controller B70 series, magnetic limit switch.	44

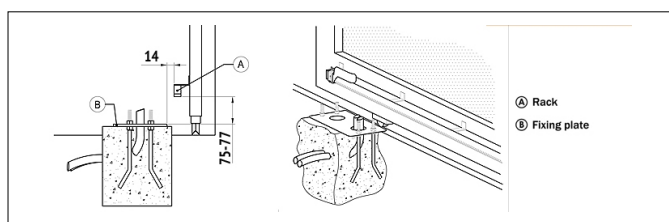
PRODUCT TECHNICAL SPECIFICATIONS	
Max gate weight	800-1000 kg
Power line supply	230V AC - 50Hz
Motor power supply	24V
Power rating	200W
Frequency of use	Intensive use
Thrust	50 - 1000N
Operating temperature	-20+55°C
Protection level	IP43
Reductor Type	Irreversible
Manoeuvre speed	12 m/min (0.20 m/s)
Limit switch	Magnetic
Onboard control unit	B70/1DC
Encoder	Digital native encoder + magnetic digital SENSORED, 4096 PPR
Batteries recovery	Optional 2 internal battery 12V 1,2AH - Optional 2 external battery 12V 4,5AH
Type exit gear	Z15/mod 4
Operating cycles per day (opening/closing - 24 hours no stop)	1300
Maximum dimension product in mm (L x W x H)	315 x 165,8 x 329
Product weight packed (Kg)	11,9

PRODUCT DIMENSIONS AND PREPARING FOR INSTALLATION

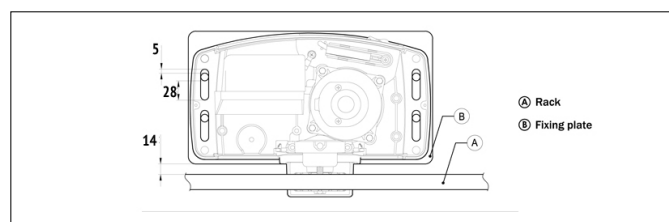


DIMENSIONS

PRODUCT PREPARING FOR INSTALLATION



PREDISPOSITION FOR STANDARD INSTALLATION



PREDISPOSITION FOR STANDARD INSTALLATION

PRODUCT ACCESSORIES



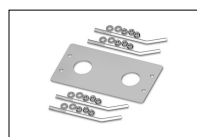
B71/BC
Batteries charger for brushless digital controller B70/1DC.



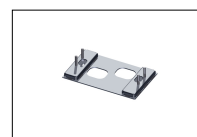
BT12V12
Pair of batteries 12V 1.2 Ah.



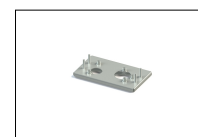
BT12V45
Pair of batteries 12V 4.5 Ah.



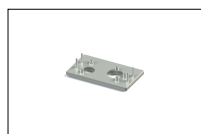
KT214
Fixing plate with stay bolts and screws H30 series.



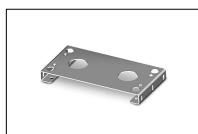
KT214/SC
Adapter plate with stay bolts and screws H30 series.



KT214/SF
Adapter plate with stay bolts and screws H30 series.



KT214/SN
Adapter plate with stay bolts and screws H30 series.



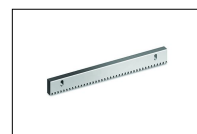
KT221
Raised fixing plate for H30 series (+3,5 cm).



HT418
External box without batteries, for battery BT12V45 (12V DC 4,5 Ah)



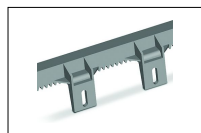
GA550
Galvanised steel rack 22x22x1000 module 4.



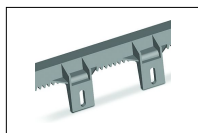
GA551
Galvanised steel rack 30x12x1000 module 4 with spacers and screws.



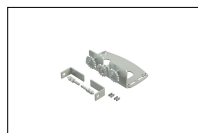
GA554
Pocket of 6 spacers (2,5 Cm) and screws.



GA553
Nylon rack module 4 with 6 connectors L.1000.



GA557
Roger Technology nylon rack module 4 with 6 connectors L.1000.



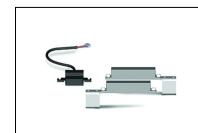
LT330
Chain drive kit for H30 BH30 series.



LT334
1/2" X 5/16" 5 meter chain piece for LT330 with joint.



LT335
1/2" X 5/16" joint for LT334 chain section.



MC775
Kit magnetic limit switch for control unit H70/103AC, H70/104AC, B70/1DC, B70/1DCHP.



R99/C/001
Signboard "Automatic Opening".