




# PRODUCT TECHNICAL DATASHEET

# H30/644

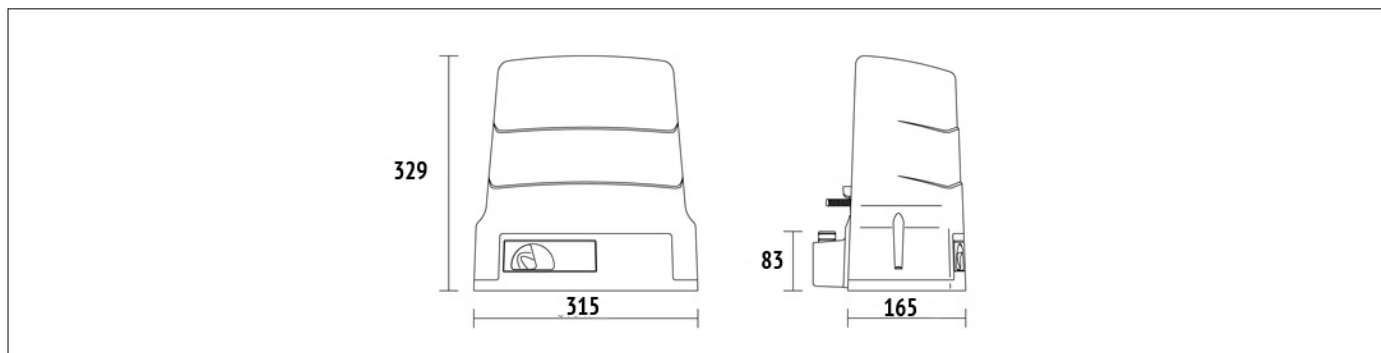
- Optical encoder 
- Magnetic limit switch 
- 230V AC 



CODE	DESCRIPTION	PCS/PALLET
H30/644	Electromechanical motor 230V AC irreversible ideal for sliding gates up to 600 Kg with built-in control unit H70, optical encoder and magnetic limit switch.	44

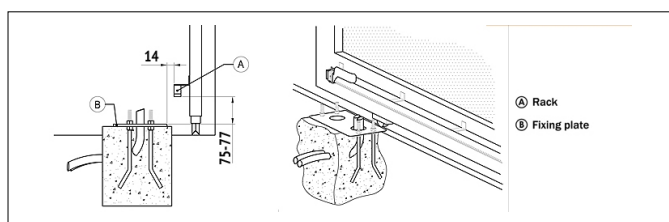
PRODUCT TECHNICAL SPECIFICATIONS	
Max gate weight	600 kg
Power line supply	230V AC - 50Hz
Motor power supply	230V AC
Power rating	240W
Frequency of use	50%
Thrust	300N
Operating temperature	-20+55°C
Protection level	IP44
Reductor Type	Irreversible
Manoeuvre speed	9.5 m/min (0.16 m/s)
Motor thermal protection	150°C
Incorporated condenser	12,5 µF
Limit switch	Magnetic
Onboard control unit	H70/104AC
Encoder	Optical
Type exit gear	Z15/mod 4
Maximum dimension product in mm (L x W x H)	315 x 165,8 x 329
Product weight packed (Kg)	11,8
Number items per pallet/box	44

# PRODUCT DIMENSIONS AND PREPARING FOR INSTALLATION

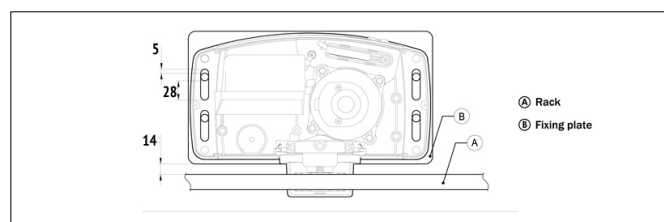


DIMENSIONS

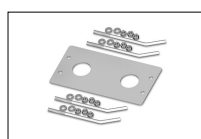
## PRODUCT PREPARING FOR INSTALLATION



PREDISPOSITION FOR STANDARD INSTALLATION



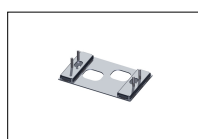
## PRODUCT ACCESSORIES



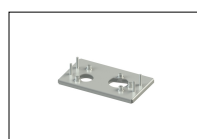
**KT214**  
Fixing plate with stay bolts and screws H30 series.



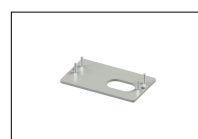
**KT214/SA**  
Adapter plate with stay bolts and screws H30 series.



**KT214/SC**  
Adapter plate with stay bolts and screws H30 series.



**KT214/SF**  
Adapter plate with stay bolts and screws H30 series.



**KT214/SN**  
Adapter plate with stay bolts and screws H30 series.



**KT221**  
Raised fixing plate for H30 series (+3,5 cm).



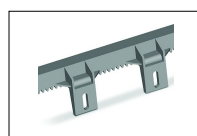
**GA550**  
Galvanised steel rack 22x22x1000 module 4.



**GA551**  
Galvanised steel rack 30x12x1000 module 4 with spacers and screws.



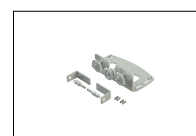
**GA554**  
Pocket of 6 spacers (2,5 cm) and screws.



**GA553**  
Nylon rack module 4 with 6 connectors L.1000.



**GA557**  
Roger Technology nylon rack module 4 with 6 connectors L.1000.



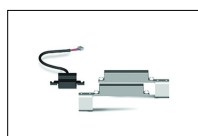
**LT330**  
Chain drive kit for H30 - BH30 series.



**LT334**  
1/2" X 5/16" 5 meter chain piece for LT330 with joint.



**LT335**  
1/2" X 5/16" joint for LT334 chain section.



**MC775**  
Kit magnetic limit switch for control unit H70/103AC, H70/104AC, B70/1DC, B70/1DCHP.



**R99/C/001AL**  
Signboard "Automatic Opening" Aluminium version.



**R99/C/001**  
Signboard "Automatic Opening".